

JRCJames Ross Collection
WeAr the Future

James Ross Collection

SCHEDA TECNICA

JRCJames Ross Collection
WeAr the Future

Polar Fleece Cavalese Lady

**Lightweight and breathable technical fleece**

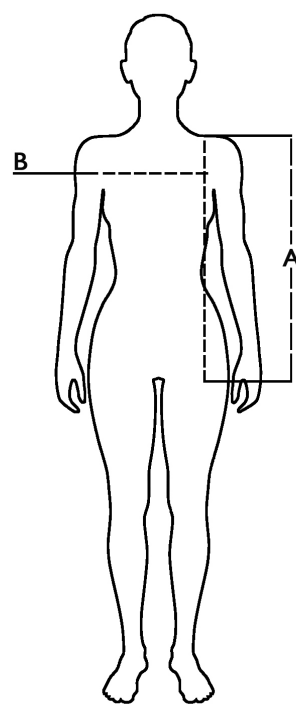
- 57% recycled polyester, 34% polyester, 9% elastane
- No label
- Outer windproof fabric with durable water-repellent coating
- Windproof trim and lining
- Bi-elastic fabric
- Recycled fabric
- Slim fit
- Two waist pockets with zip
- One chest pocket with waterproof zip
- Security pocket with zip
- Preformed sleeves
- Breathable fabric



S - M - L - XL**Colors and item codes:**

999210 BLACK

Size table

Taglie / Sizes (+/- 5%)	A lunghezza / front length	B torace / chest
S	63	48
M	65	51
L	67	53
XL	69	55

**Technical description**

	Composizione / Fabric Composit	 g/m ²
Tessuto esterno/Shell	91% Poliestere - 9% Elastan	250
Imballo/Packages	 20 pcs	
Istruzioni di Lavaggio / Care Label	