

JRC

James Ross Collection

WeAr the Future

James Ross Collection

SCHEDA TECNICA

JRC

James Ross Collection

WeAr the Future

Waistcoat Coblenza Lady



WAISTCOAT IN COMPOSITE FABRIC

- Main fabric in soft 310T nylon taffeta with water-repellent treatment.
- Polyester padding
- Meshed polyester lining on the front and in polyester in the back
- Additional fabric on shoulders and hips in black 3-layer softshell in 95% polyester - 5% elastane, waterproof 8000mm breathability 1000h; anti-pilling fleece interior
- YKK taped zippers
- Two external zip pockets
- One zipped chest pocket with reflective taping
- Reflective piping along the rear side
- Internal neck reinforcement tape with coat hanger
- Central zip with internal windproof fabric
- Chin protection fabric
- Elastic fabric in the armholes and at the hem

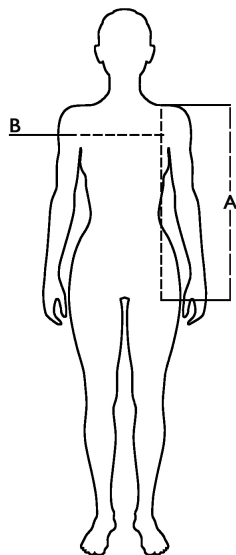
S - M - L - XL - XXL

Colori disponibili

997780 BLACK








Misure

| Taglie (+/- 5%) | A lunghezza / front length | B torace / chest |
|-----------------------|----------------------------------|------------------------|
| S | 61,5 | 48 |
| M | 64 | 50 |
| L | 66,5 | 52 |
| XL | 69 | 54 |
| XXL | 71,5 | 56 |



Rapporto emesso da **Ritex divisione**
Ecochem spa N. **24RT00402** del
29.02.24

Descrizione tecnica

| | Composizione / Fabric Composit |  g/m 2 |
|--|---|---|
| Tessuto esterno / Shell | 100% nylon | 60 |
| Fodera / Lining | 100% poliestere | |
| Imbottitura / Padding | | 140 |
| Imballo / Packages |  20 pcs | |
| Istruzioni di Lavaggio / Care Label |      | |

CE - DPI/PPE Cat I conforme al Reg. 2016/425