

# JRC

James Ross Collection

WeAr the Future

# James Ross Collection

SCHEDA TECNICA

# JRC

James Ross Collection

WeAr the Future

## Jacket Heidelberg Lady



### COMPOSITE FABRIC JACKET

- Main fabric in soft 310T nylon with water-repellent treatment.
- Polyester padding
- Meshed polyester lining on the front and in polyester in the back
- Additional fabric on sleeves, shoulders and sides in black 3-layer softshell in 95% polyester - 5% elastane, waterproof 8000mm breathability 1000h; anti-pilling fleece interior
- YKK taped zippers
- Two external zip pockets
- One zipped chest pocket with reflective taping
- Reflective piping along the rear side
- Internal neck reinforcement tape with coat hanger
- Central zip with internal windproof fabric
- Chin protection fabric
- Elastic fabric at the cuffs and hem

**S - M - L - XL - XXL**

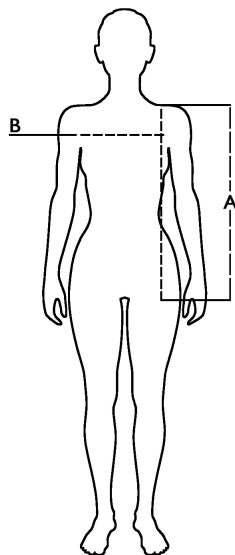
### Colori disponibili

997760 BLACK

## Misure

Taglie (+/- 5%)	A lunghezza / front length	B torace / chest
S	61,5	48
M	64	50
L	66,5	52
XL	69	54
XXL	71,5	56

Rapporto emesso da **Ritex divisione  
Ecochem spa** N. **24RT00396** del  
**29.02.24**



## Descrizione tecnica

	Composizione / Fabric Composit	g/m 2
Tessuto esterno / Shell	100% nylon	60
Imbottitura / Padding	100% poliestere	140
Imballo / Packages	15 pcs	
Istruzioni di Lavaggio / Care Label		

**CE** - DPI/PPE Cat I conforme al Reg. 2016/425