

JRCJames Ross Collection
WeAr the Future

James Ross Collection

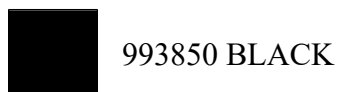
SCHEMA TECNICA

JRCJames Ross Collection
WeAr the Future

Jacket Artic Lady

**Softshell jacket 3 layers, waterproof and breathable**

- 97% polyester - 3% elasthan
- Waterproof 6000 mm/H₂O
- Breathability 4000 g/M2/24h
- Thermic lining inside the front part
- Reflective printing on front and back side
- Raglan sleeves
- Detachable padded-hood with drawstring
- Laser cutting zip
- One chest pocket with zip
- Two pockets with zip
- Inner wallet pocket
- Elastic cuffs with velcro closing
- Drawstring at the bottom

S - M - L - XL - XXL**Colors and item codes:**

993850 BLACK



993851 NAVY



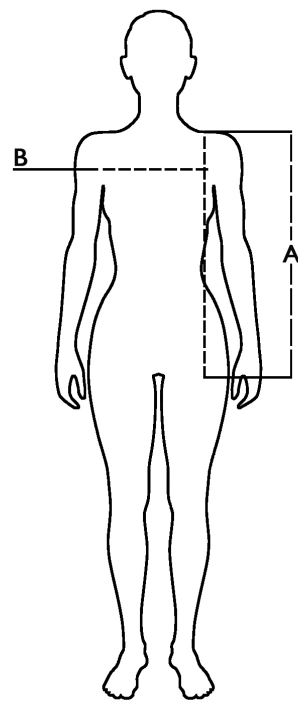
993852 RED



993853 ROYAL

Size table

Taglie / Sizes (+/- 5%)	A lunghezza / front length	B torace / chest
S	65	50
M	67	52
L	69	54
XL	71	56
XXL	73	59

**Technical description**

	Composizione / Fabric Composit	g/m ²
Tessuto esterno/Shell	97% poliestere - 3% elasthan	330
Fodera/Lining	100% poliestere tricot	55
Imballo/Packages	15 pcs	
Istruzioni di Lavaggio / Care Label		

Test reportPerformed by **Ritex divisione Ecochem spa N. 21RT02808** of **25.08.21****CE** - DPI/PPE Cat I conforme al Reg. 2016/425